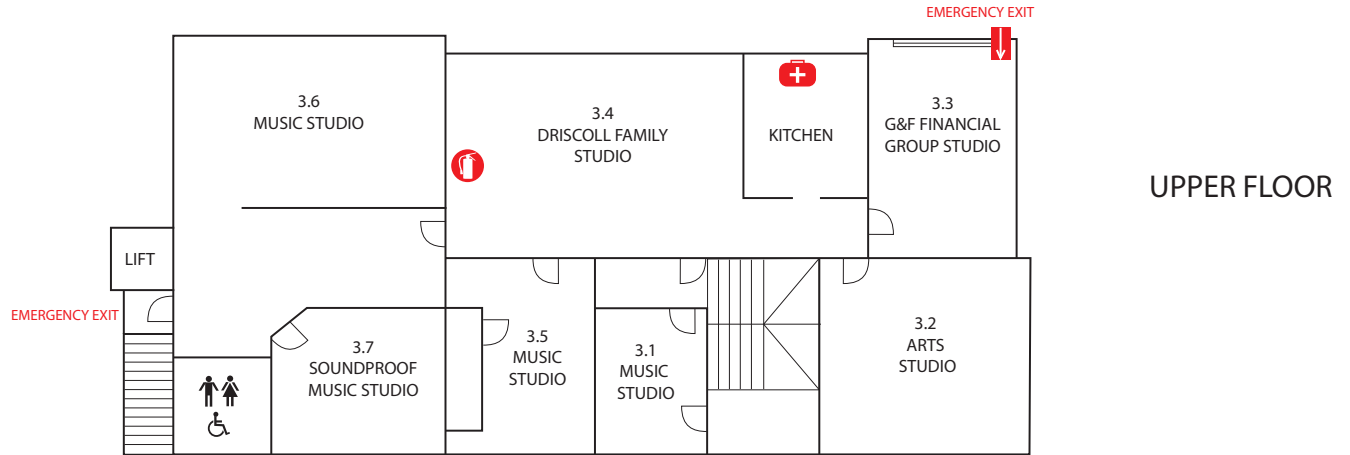



Port Moody Arts Centre Floor Plan with Measurements



| Room No. | Room | Room Area (sqft) | Room Width (ft) | Room Length (ft) |
|----------|------------------------------|------------------|-----------------|------------------|
| 3.1 | Music Studio (top of stairs) | 100 | 9 | 12 |
| 3.3 | G&F Financial Group Studio | 370 | 18 | 21 |
| 3.4 | Driscoll Family Studio | 420 | 22 | 20 |
| 3.5 | Music Studio | 100 | 8 | 13 |
| 3.6 | Music Studio (N/W corner) | 220 | 18 | 13 |
| 3.7 | Music Studio (soundproof) | 140 | 13 | 11 |

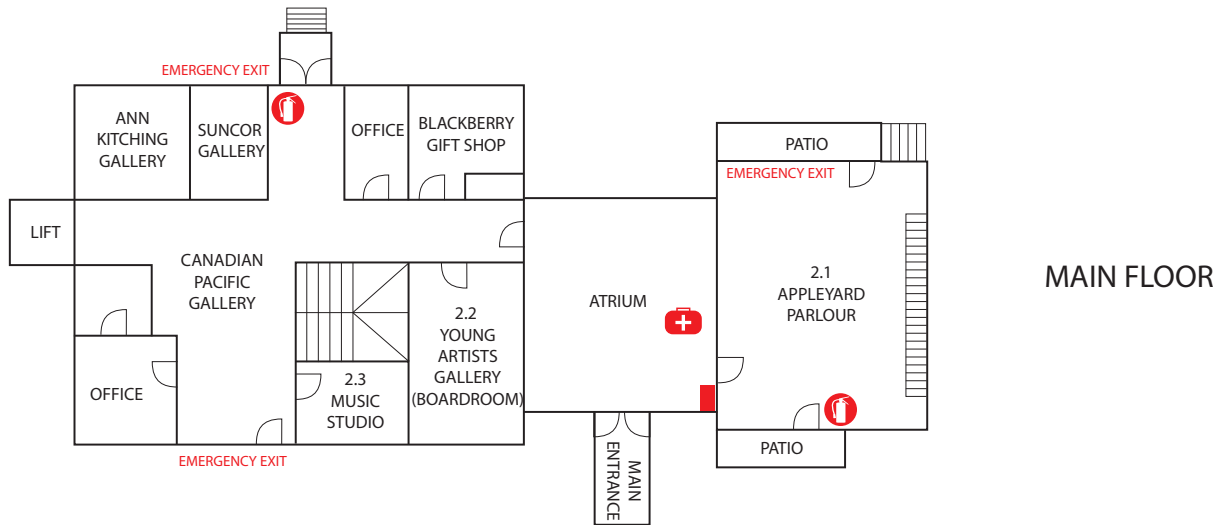
Note:

- Width is generally West to East
- Length is generally North to South
- All measurements are approximate

| | |
|---|--------------------|
|  | First Aid Kit |
|  | Fire Extinguisher |
|  | Fire Safety Plan |
|  | Fire Safety Ladder |
|  | Fire Escape |

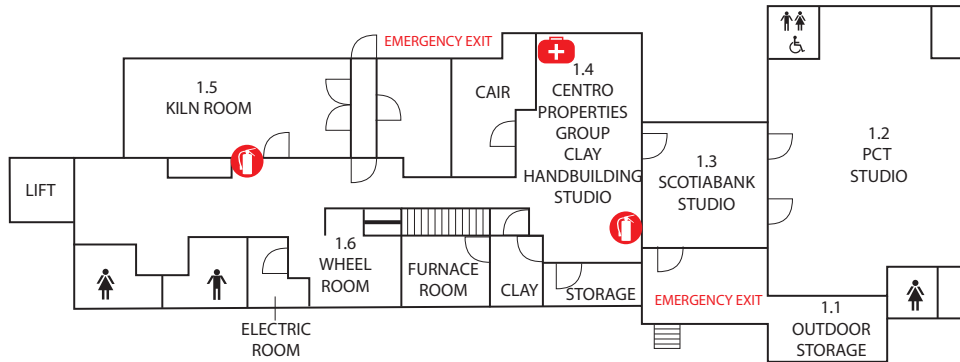


Port Moody Arts Centre Floor Plan with Measurements



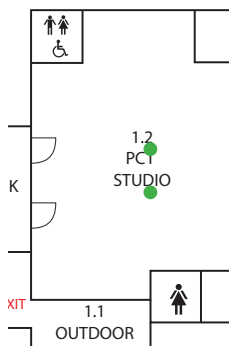
| Room No. | Room | Room Area (sqft) | Room Width (ft) | Room Length (ft) |
|----------|-----------------------------------|------------------|-----------------|------------------|
| 2.1 | Appleyard Parlour | 740 | 23 | 28 |
| | Plus space for serving | | 14 | 7 |
| 2.2 | Young Artists Gallery (Boardroom) | 330 | 20 | 17 |
| 2.3 | Gallery Music Studio | 100 | 13 | 8 |

Port Moody Arts Centre Floor Plan with Measurements



LOWER FLOOR

| Room No. | Room | Room Area (sqft) | Room Width (ft) | Room Length (ft) |
|----------|--------------------------|------------------|-----------------|------------------|
| 1.2 | PCT Studio | 850 | 31 | 23 |
| | Plus space at North wall | | 17 | 9 |
| 1.3 | Scotiabank Studio | 450 | 21 | 22 |



1.2 PCT Studio Post Placement

- The posts are 17' from the front of the room, 13' from the back and are 5' apart.
- They are 16' from the North wall and 6' from the closest South wall.